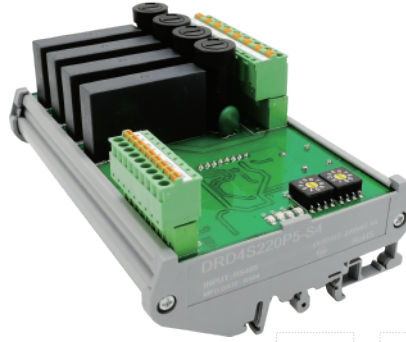
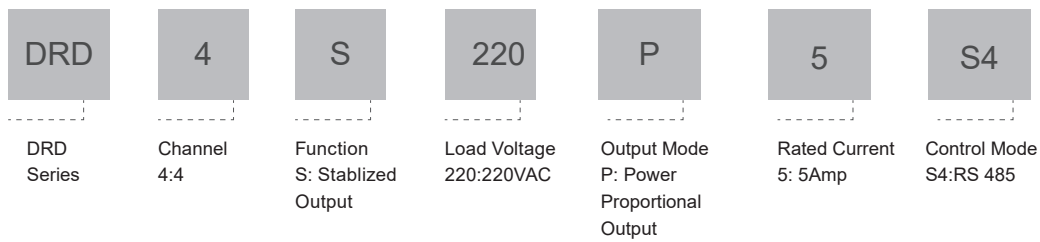


Product Description

- ◆ RS 485 Bus Control
- ◆ Modbus RTU Communication
- ◆ Stabilized Voltage Output
- ◆ Load Current:5A
- ◆ Dielectric Strength≥4000Vrms
- ◆ LED Indication
- ◆ Output Loop Anomaly Detection



Ordering Information



Technical Specification

| Input Circuit | |
|--------------------------------------|------------------------|
| Auxiliary Power Supply Voltage Range | 19.6 ~ 28.8VDC |
| Max.Auxiliary Power Supply Current | 60mA |
| Input Control | RS 485 (2 Connections) |

| Output Circuit | |
|---|----------------------|
| Voltage Range of Load Power Supply (Three-phase Four-wire System or Single-phase 220 VAC) | 150-280VAC |
| Output Load Voltage Range | 0-220VAC |
| Load Current | 5A |
| Maximum Surge Current [@10ms] | 50Apk |
| Maximum I ² t Value[@10ms] | 12.5A ² S |
| Maximum Transient Overvoltage | 600Vpk |
| Maximum Off-State Leakage Current [@ Rated Voltage] | 5mA |
| Maximum On-State Voltage Drop [@ Rated Current] | 1.6Vrms |
| Minimum Off-State dv/dt [@ Maximum Rated Voltage] | 200V/μs |

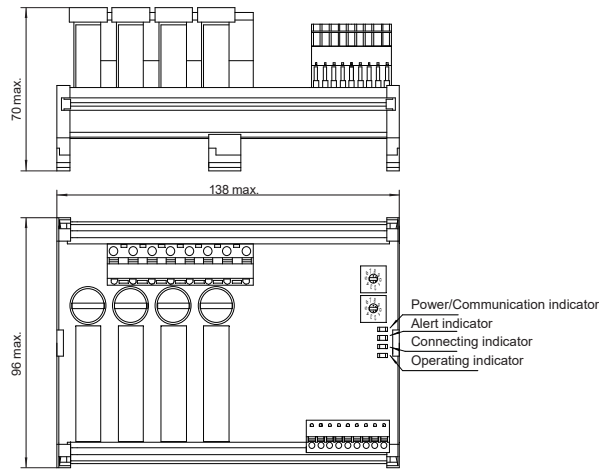
General Information

| General Information | | |
|--------------------------|----------------|----|
| Control Register Address | First Channel | 20 |
| | Second Channel | 21 |
| | Third Channel | 22 |
| | Fourth Channel | 23 |
| Station Address Range | 01~99 | |

| | |
|-------------------------------------|----------------|
| Max. Station Point | 99 |
| Data Bit Rate | 9600 bps |
| Communication Agreement | Modbus RTU |
| Dielectric Strength | ≥4000Vrms |
| Ambient Operating Temperature Range | -30 C ~ +80 C |
| Ambient Storage Temperature Range | -30 C ~ +100 C |
| Weight [Typical] | 336g |

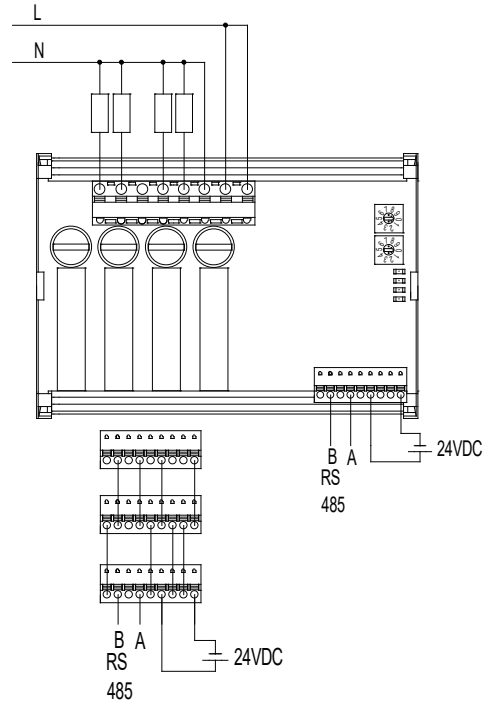
Installation

Unit: mm



- Power supply/Communication indicator: LED lights up when there is a power supply;
- LED becomes brighter when the module is communicating;
- Alert indicator: LED lights up when there is a failure;
- Connecting indicator: LED lights up when the control resistor value is not zero;
- Operating indicator: LED flashes every 1.5s when the module is operating.

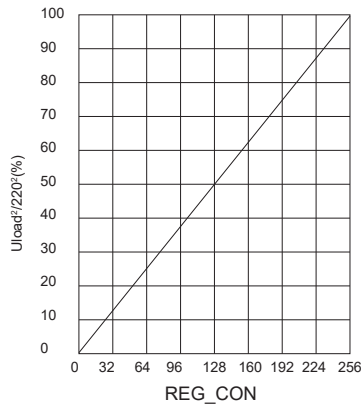
Wiring Diagram



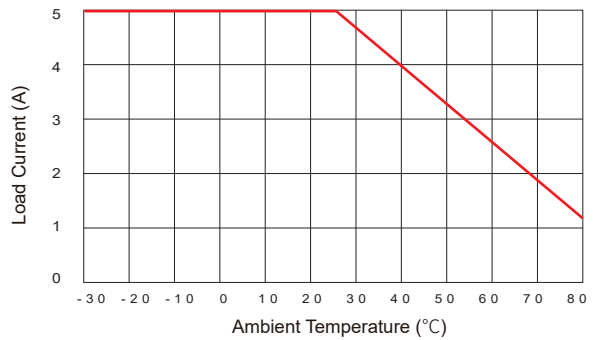
Connection mode for 2 or more control terminals

Note: Since the maximum current capacity of each output terminal is about 8A, the two "L" output terminals must be connected to the L terminal of the power supply separately.

Output/Proportional Control Features



Thermal Derating Curve



Important Notice

In order to reduce the external interference, we recommend to use twisted pair or shielding line as RS485 control line.