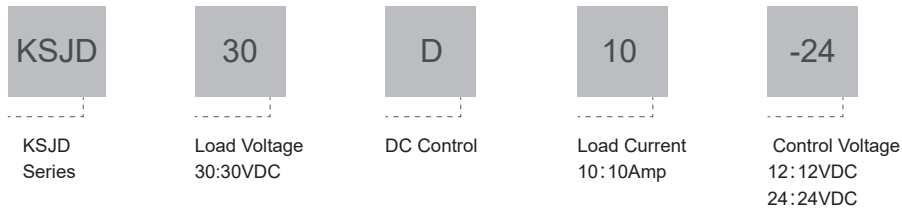


**Product Description**

- ◆ MOSFET Output
- ◆ Low Impedance
- ◆ Control Voltage: 12VDC or 24VDC
- ◆ Panel Mounted
- ◆ LED Indicator
- ◆ RoHS Compliant



**Ordering Information**



**General Specifications**

Input Specifications (Ta=25°C)		
Control Voltage Range	12VDC 24VDC	12VDC 24VDC
Must Turn-on Voltage	12VDC 24VDC	9.6VDC 19.2VDC
Must Turn-off Voltage		2VDC
Maximum Input Current		15mA
Maximum Reverse Voltage	12VDC 24VDC	-12VDC -24VDC

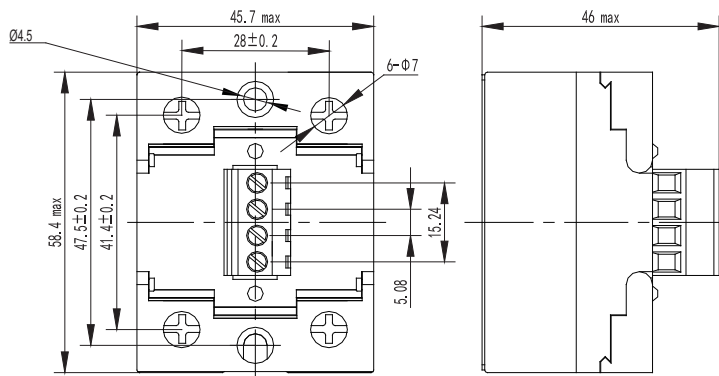
Output Specifications (Ta=25°C)		
Load Voltage Range		8 ~28.8VDC
Maximum Transient Voltage		30VDC
Load Current Range		0.002 - 10A
Maximum Surge Current[@10ms]		30A
Maximum Turn-on Time		300µs
Maximum Turn-off Time		300µs
Maximum Off-State Leakage Current@Rated Load Voltage (mA)		0.1mA
Maximum On Resistance		14mΩ max. ( @TA=25°C)

General Specifications (Ta=25°C)		
Dielectric Strength[50/60Hz]	Input, Output/Base Input, Output/Base	2500Vrms 1000MΩ
Operating Temperature Range		-30°C ~ +80°C
Storage Temperature Range		-30°C ~ +100°C
Weight[Typical]		150g

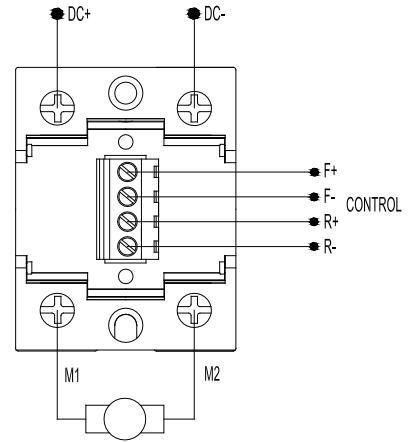
Application

DC motor control

Outline Dimensions/Wiring Diagram

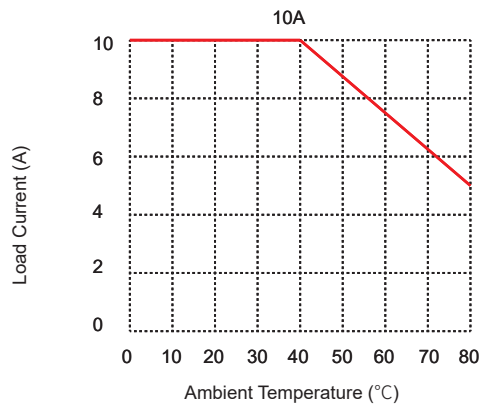


Outline Dimensions



Wiring Diagram

Temperature Curve



General Notes

1. Suppression circuit must be added for inductive load.
2. Ensure correct polarity of the control circuit, otherwise it may damage the product.
3. When the operation temperature is high, please consider the derating as per the thermal curve.
4. Ensure the electrical grounding reliably during the use of the SSR.