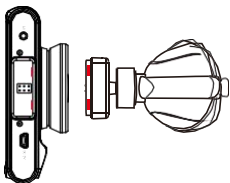


User Manual

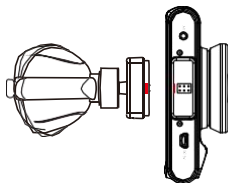


Safe driving Better life

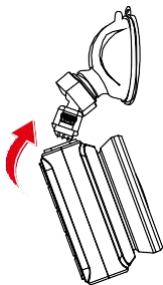
Magnetic Holder Installation Instruction



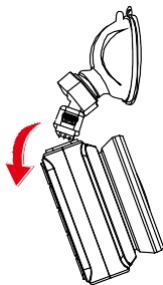
Holder base one side have 2 gaps must be fit into camera body 2 clips



Holder base the other side have only 1 gap also must be fit into camera body 1 clip



Please clip into the holder base gap like the graphical direction



Please remove the camera body clips from the holder base gap like the graphical direction

Content

Product Introduction.....	1
Notice Before Use.....	1
Structure.....	2
Function	2~3
Operation Guide.....	3~4
Recording Video.....	4
Taking Pictures.....	5
Playback.....	5~6
Settings.....	6~11
FAQ.....	11~13

Product Introduction

Dash Camera is a device can record video audio information while driving, so with this device you can avoid trouble on road if somebody want to offend you, it can provide clear evidence in car accident. What's more, it can record wonderful view on the way when travel.

In order to use this device correctly more well, please read below guide carefully before you use.

Notice Before Use

1. Please use original high-speed class 10 TF card to storage video, unless it may not be compatible with this device indicate “file error” or “SD card error”, this device max support 32GB TF card.
2. You must format memory card when you use this device at first time, if memory card inside have other video or picture it can not be read by device.
3. Pay attention to the insert direction of the card. If insert card from the wrong side, it may damage the device and TF card.
4. Please remove off the car charger lighter with your car when you do not use this dvr device like parking, other wise your car engine start big instant electricity current probably burn out your dvr device.
5. This dvr device special use for car, please use it inside car with car charger, if no car charger recharging, its built-in battery very very small, sometimes may can not be turned on successfully because of noenough electricity.
6. This device only allow electricity 5V 1A, so please DO NOT use any home charger or USB cable to recharge, you MUST use our original car charger to do recharging, because some home charger adapter have 12V output, it is not suitable, it probably burn out the dvr device. Or sometimes comes out strange squeaky noisy sound because of current not compatible.

STRUCTURE



▲	Short press →Screen is off	Long press →Locking
▲	In the menu →Up	Short press in recording mode →Record audio ON/OFF
OK	Short press →Start/Stop	Long press →Power ON/OFF
▼	In the menu →Down	Short press in recording mode →Park mode ON/OFF
M	Short press →Mode	Long press →Menu

FUNCTION

1. Cycle Recording

Cycle recording usually have 1 mins, 3 mins, 5 mins settings etc..., with this cycle recording function,the dvr camera can over write the old video (except the locked video) automatically,so that the sd card will not be full.

2. Motion Detect

Motion detect means when dvr is standby mode, if something move at the front of your car, dvr can detect it and start recording automatically. This function can protect your car more safely when you are not in your car.

3. G-SENSOR

G-Sensor means Gravity Sensor, if your car be shocked by external force suddenly like an accident, G-Sensor function can sense and lock the instantaneous crash video immediately, this locked video can be as the evidence of accident, so it will not be over written by cycle recording function.

4. Parking Monitor

When you park your car somewhere, turn on parking monitor function can make this dvr camera do recording while parking time to avoid any offend to your car like steal or scratch. At the same time, please do not forget set G-Sensor sensitive as high to work up this function, also must buy external power cable to do power supply while parking. (Details about power cable please see below)


Kindly remind: All car dvr inside battery very small can last working only around 2~3 minutes if no recharging, so Parking Monitor function can only be used together with power cable.

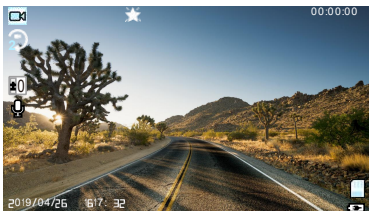
Operation Guide

- 1. Power On/Off:** Long press power button around 2~3 seconds to turn on & off.
If have TF card inside, once turn on it will enter into recording mode automatically.
- 2. Start/Stop recording:** In video mode, short press OK button start recording, short press it again, the recording will be stopped.
- 3. Photo :** In photo mode, short press OK button can take photo
- 4. Playback:** In playback mode, short press OK button can play the video.
- 5. OK button:** In video mode/photo mode/playback mode, short press menu button enter into menu, short press up/down to browse, short press OK button to confirm.
- 6. Up button:** In menu setting and camera switching mode, it is up function. In standby mode, keep press up button can make motion detection on/off. In playback mode, short press up button can play fast backward
- 7. Down button:** In menu setting and camera switch mode, it is down function. In video mode, short press down button can make audio on/off. (Notice: the setting will be saved automatically, no need to set once again the next time) In playback mode, short press down button can play fast forward

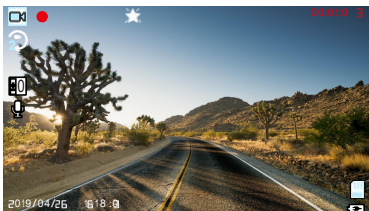
8. **Menu:** In standby mode, short press menu button, enter into main menu setting, short press UP/DOWN button, choose the options which you need, short press OK button to confirm. Settings finished, short press Menu button until exit.
9. **Mode button:** In standby mode, short press mode button can switch between different mode (Video/Photo/Playback)

Recording video

In Video mode, in the upper left corner of the screen the  icon will be displayed, press OK button to start recording.



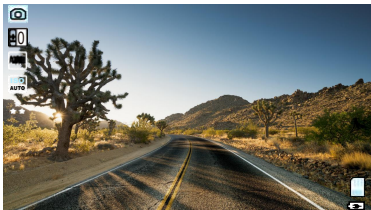
REC  icon will appear flashing in the upper left corner. To stop recording press OK button.



Taking pictures

1. Press Mode (M) button.

In the upper left corner of the screen,  icon will be displayed.



2. Press OK button to take a picture.

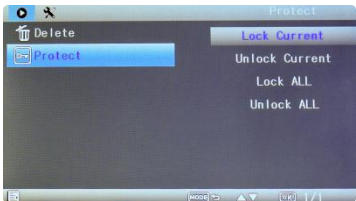
Note: Hold the camera steady when taking pictures, otherwise the pictures will come out blurry.

Playback

1. **Browsing files:** Press Mode (M) button to switch to playback mode, browse files using UP/DOWN buttons.
To play back a file, press OK button.
2. **Delete and Protect:** In playback mode, press Menu button, select "Delete", you will have two options: "delete current?" to delete the selected file, and "delete all?" to delete all the files on the memory card (except the protected files).
Press OK button to select and confirm.



In playback mode, press Menu button, select "Protect", you will have protect lock options ("lock one" to protect the selected file, "lock all" to protect all the files on the memory card) and protect unlock options ("unlock one" to unlock the selected files, "unlock all" to unlock all the protected files on the memory card).



SETTINGS

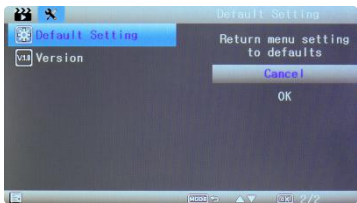
General settings

In any mode, press Menu (M) button twice, to open general settings menu.



Date/Time	Set date and time
Auto Power Off	Select the automatic power off delay time
Screensavers	Select the screen turning off delay time
Beep sound	Activate / Deactivate button pressing sounds
Language	Select the menu display language
Frequency Screen refresh rate	50 Hz or 60 Hz
Format	Select to format the memory card

Browse settings using UP/DOWN buttons and OK button to edit and confirm a setting.



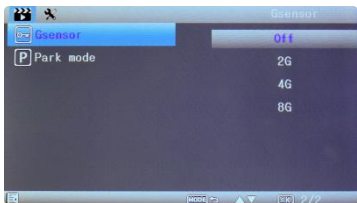
Default setting	Select to revert to factory settings
Version Firmware version	Select to check system firmware version

Video settings

In video mode, press Menu (M) button.



Night Vision	Select on/off to Starlight Night Vision
Resolution	Select recording resolution
Loop recording	Select recording split duration, or deactivate the cyclic recording function
Exposure	Adjust image exposure level
Motion Detection	Activate / Deactivate motion detection trigger recording
Record Audio	Activate / Deactivate recording with sound
Date Stamp	Activate / Deactivate date stamp on the recording



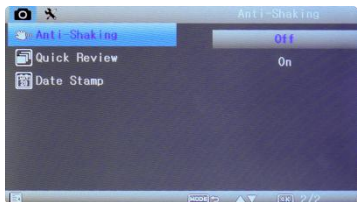
G sensor	Adjust sensitivity level for the gravity sensor
Park mode	Adjust sensitivity level for the parking mode

Photo settings

In photo mode, press Mode button and press Menu(M) button.



Resolution	Adjust photo resolution
Sequence	Activate / Deactivate burst shooting mode
Quality	Adjust image quality
Sharpness	Adjust sharpness level
White Balance	Adjust the white balance according to the environment
ISO	Select light sensitivity level
Exposure	Adjust image exposure level



Anti-Shaking	Activate / Deactivate image stabilizing
Quick Review	Select preview duration after taking a shot
Date Stamp	Activate / Deactivate date and time stamp on the photo

FAQ:

Q: Why my dvr camera indicate “SD card Full”?

A: 1) Please check if your memory card is original brand high speed Class 10 memory card, if you use some copy card like Class 4 or Class 6, it will indicate “SD card full” because it is not compatible. (Note please: DVR max support only 32GB card only)

2) Please check your dvr MENU settings if you have opened on Loop Recording this function already? You must open ON Loop Recording this function the previous video can be over writing.

- 3) Please check your dvr MENU settings if you have turn OFF G-Sensor, Parking Monitor & Motion Detect this 3 functions already at the same time? If G-Sensor is on, the file will be protected to lock that can not be over write, also dvr will auto go to recording all the time if Parking Monitor & Motion Detect is on, so the SD card will be full.
- 4) You must format to clear up your memory card file by hand at least 2~3 times within a month because the memory card inside will have some locked file that happen while driving at some emergency time, but this locked files can not be over write automatically. You must delete them by hand.

Q: Why my dvr camera auto on & off continuously?

A: Please check first if your dvr MENU settings open on Parking Monitor and G-Sensor this 2 function already? Normally if Parking Monitor is on the dvr will go to Parking Monitor mode, in this mode status, dvr will auto on once detect any touch or shake, then it will auto off if while no touch. So it will auto on & off continuously. G-Sensor this function also will lock this status video file to avoid no over writes then it can keep as parking evidence. Please turn off this 2 function in MENU settings then try again. At the same time, please turn off Motion Detect this function in MENU settings also, because if Motion Detect is on, it will auto go to recording once have any movement in front.

Q: Why my dvr always freeze while recording?

A: Please check if your memory card is original brand high speed Class 10 memory card, if you use some copy card like Class 4 or Class 6, it will indicate SD card full or error because it is not compatible will happen freeze while recording.

So if your camera happen freeze problem, please try to use another different new original class 10 memory card to have a try, then you can identify the problem reason. If change a new card still can not be ok, that maybe the dvr camera firmware problem, please contact seller to upgrade firmware.

Q: Why my dvr camera recording image not clear?

A: Please check the video link that we upload online website link already, it is real link, so its recording quality image exactly same as product. In dvr camera MENU settings normally have 1080P, 720P, VGA option.

Highest quality image is 1080P, middle quality image is 720P, and lowest quality image is VGA. Please set as highest resolution 1080P when you do recording.

If you set resolution as VGA, video image quality will be not clear, please change to 1080P option in settings.

Besides, video quality image sometimes will be not so good if the surroundings not so good like at night or fog days.

Note: we reserve the modification right of the device design and specifications without notice